

DELL POWERVAULT ME5 STORAGE

Purpose-built and optimized for high-value SAN and DAS workloads

ESSENTIALS

Simple

- **Simple:** Easy to order, quick to install, simple-to-use
- **Fast:** Run workloads with more processor power, 2X more IOPs, 70%+ more bandwidth, and faster host connectivity.
- **Affordable:** Valid configurations starting as low as \$12,000 (USD) and low TCO.

Benefits

- **DAS:** Validated with Dell PowerEdge Servers and is 16G ready.
- **Versatile:** Ideal for high capacity (up to 8PB) workloads like CCTV, HPC, Virtualization, SQL DBs, VDI, more.
- **All-inclusive:** All the software you'll need to store, manage, and protect your data.
- **Scalable:** Buy the capacity you need, then easily and affordably pay-as-you-grow.
- **Management:** Extensive ecosystem with PowerVault Manager, CloudIQ, Nagios, OpenManage Enterprise, CLI and REST APIs
- **Flexible:** Configure systems as All-Flash, Hybrid Flash or All-HDDs

ME5 at the Edge

Solutions: CCTV/Surveillance, Gaming, Oil and Gas Exploration

OEM Ready

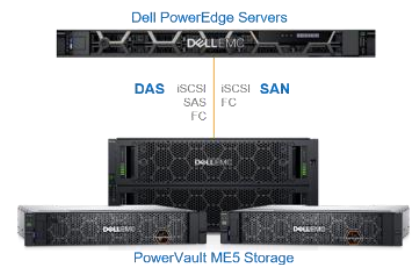
- From bezel to BIOS to packaging, your ME5 storage array can look and feel as if they were designed and built by you.

Dell PowerVault ME5, the new gold standard for entry storage, affordably brings the essential features and data services of mid-to-high end storage to small-medium businesses (SMBs). PowerVault ME5 unleashes substantial performance, capacity and bandwidth gains over its predecessor system without compromising simplicity, features or business outcomes. Designed to meet several SMB data storage challenges, PowerVault ME5 reduces complexity, drives more performance, supports higher capacity, ensures data protection and achieves budget stability when supporting a diverse SMB workload and application environment.

If you're looking for raw power, highly scalable capacity and absolute simplicity in a small footprint; if you're an SMB with budget constraints; then PowerVault ME5 starting in either 2U or 5U – is for you. Designed with dual-active controllers, multi-core processing and five-9's availability, PowerVault ME5 arrays deliver the performance of flash with the best economics of disk making it an ideal solution for SMB high-value workloads.

PowerVault ME5 Storage and PowerEdge Servers

Adding external storage to servers can create many tangible benefits for SMBs. Separating servers from storage means you won't be faced with server upgrades or server swaps due to lack of capacity. With PowerVault controller-based arrays or JBOD, server upgrades and maintenance can occur without data disruption as data remains in place. PowerVault ME5 storage, validated with Dell PowerEdge Servers running different host operating systems, give IT organizations a dynamic, high performance and scalable infrastructure for any size business – simply and economically.

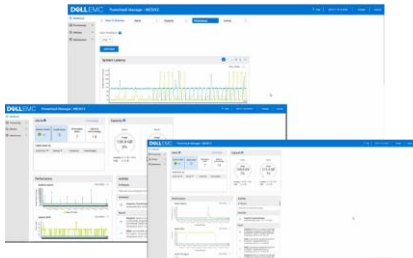


Workload Versatility

IT organizations purchase storage systems to coincide with desired application and business outcomes including the demanding challenges of data growth, data protection and budget constraints. Over 50,000 globally installed PowerVault Storage systems reliably support a wide range of SMB workload types while integrated with today's most widely used hypervisors, operating systems and management platforms. PowerVault ME5 is the ideal and affordable SMB storage solution for supporting workload types such as high-performance computing, SQL databases, virtualization, VDI and backup/archiving – to name a few. And now, PowerVault ME5's density, performance and scale make it a material solution for select Edge-based scenarios such as Cloud Gaming, Oil and Gas Exploration and CCTV.

Management Ecosystem

PowerVault ME5 is supported through a wide range of management interfaces starting with PowerVault Manager, the element manager for each PowerVault storage array. This simple to use and intuitive web-based management



Simple, intuitive management with scripting support

GUI provides configuration, management, alerting and basic remediation capabilities for the IT generalist. PowerVault Manager is included with the array as part of the no cost all-inclusive software addition.

As complexity of your IT infrastructure looms larger with more systems to track and manage, PowerVault ME5 is supported by the Dell OpenManage systems management portfolio with intuitive tools that work together to deliver automated and centralized management of your Dell infrastructure.

In those IT environments where monitoring of mission-critical infrastructure components including applications, operating systems, network protocols, storage, servers and networks is a necessity, then PowerVault ME5 can fit right into a Nagios infrastructure management platform.

Customers with ProSupport Services for PowerVault ME5 can access CloudIQ at no additional cost and with nothing else to install. CloudIQ is Dell's cloud based AIOps that uses telemetry, machine learning and other algorithms to provide users with notifications and predictive analytics indicating the operational health of the array, remediation advice, anomalies, capacity projections, reclaimable storage, and more to assist IT with strategic planning efforts. When CloudIQ is enabled through PowerVault Manager, IT organizations see improved productivity of staff and collaborate better with a single view of their IT environment.

Dell PowerVault ME5 Delivers More Compared with Dell PowerVault ME4

- 2X more performance
- 4X more capacity
- 70% more throughput
- 4X larger virtual pools
- Faster host protocols
- Faster Intel Xeon Processor
- Cross-gen replication
- Simpler, intuitive management
- PowerEdge 16G ready

Simple. Fast. Affordable.

PowerVault ME5 is the new gold standard for entry SAN/DAS storage workloads with radical simplicity, awesome performance and scalability and a balance of performance and price making it cost-effective to fit the budgets of Small to Medium Size Businesses - so you can stay focused on your business outcomes. So, whether you're looking to start small or grow to hundreds of terabytes to support high-value workloads, Dell PowerVault ME5 has you covered.



SIMPLE

Easy to install/configure; simple to manage; proactive storage analytics; PowerEdge ready



FAST

Powerful IOPs; high bandwidth; fast host connectivity; 12Gb SAS backend



AFFORDABLE

Low-cost configs & TCO; easy to own all-inclusive SW; pay-as-you-grow



[Learn more](#) about Dell PowerVault ME5



[Contact](#) a Dell Technologies Expert